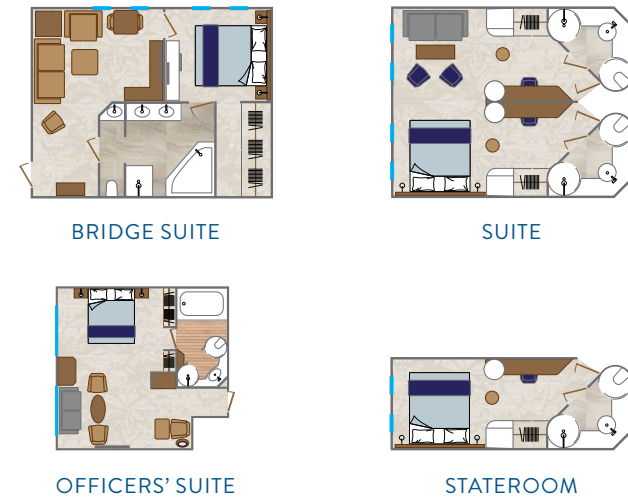
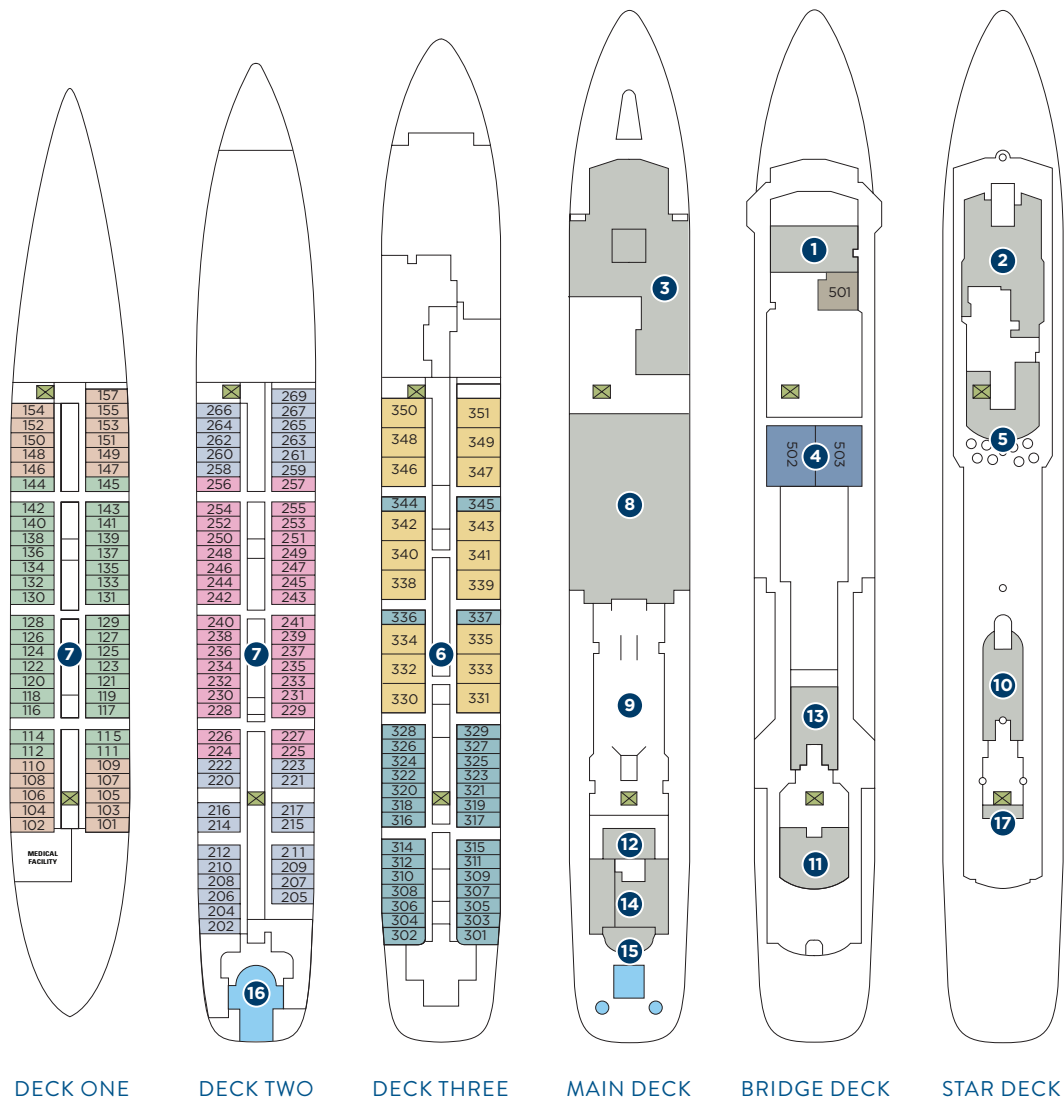


# WIND SURF

## WORLD'S LARGEST SAILING SHIP



### STATEROOMS & SUITES

**Bridge Suites:** 495 square feet (46 square meters)

**Officers' Suite:** 242 square feet (22.5 square meters), 1 bathroom

**Suites:** 376 square feet (35 square meters), 2 bathrooms

**Staterooms:** 188 square feet (18 square meters)

**Staterooms with 3<sup>rd</sup> Berths:** 117-140; all suites

**Staterooms with One Queen Size Bed Only (no twin option):** 101, 102, 157, 202, 204, 269, 301-302, 303-304

### ONBOARD SPACES

- |                         |                     |                                 |
|-------------------------|---------------------|---------------------------------|
| 1 Bridge                | 7 Staterooms        | 13 World Spa by Windstar        |
| 2 Stella Bistro         | 8 Lounge            | 14 Star Boutique                |
| 3 Amphora Restaurant    | 9 Yacht Club Café   | 15 Pool / Pool Bar / Whirlpools |
| 4 Bridge Suites         | 10 Fitness Center   | 16 Watersports Platform         |
| 5 Veranda/Candles       | 11 Compass Rose Bar | 17 Terrace Bar                  |
| 6 Suites and Staterooms | 12 Reception        |                                 |

- Bridge Suites
- Officers' Suite
- Suites
- Category TX
- Category AX
- Category A
- Category BX
- Category B
- Public Spaces
- Stairs / Elevator

### SHIP FACTS

**GUEST CAPACITY:** 342

**GUEST DECKS:** 6

**CREW MEMBERS:** 210

**LENGTH:** 535 feet (162 meters) at waterline; 617 feet (187 meters) including bowsprit

**DRAFT:** 16.5 feet (5 meters)

**TONNAGE:** 14,745 gross registered tons (grt)

**BEAM:** 66 feet (20 meters)

**SAILS:** 7 triangular, self-furling, bridge-operated sails with 26,881 square feet (2,600 square meters) of Dacron surface area

**MASTS:** 5 at 221 feet (67.5 meters)

**ENGINES:** 4 diesel electric generator sets, 2 electrical propulsion motors

**SPEED:** 10 to 12 knots with engines only; up to 15 knots with prevailing wind

**SHIP'S REGISTRY:** Bahamas



• Access to board ship is via stairs only.  
 • Access to/from outside deck may require assistance with doors and thresholds.

Illustrations are representative only. Actual layout of ships may vary slightly.